



Staff Selection Commission
(Government Of India)

REGISTRATION NUMBER : www.qmaths.in
EXAM DATE : 1-September-2016 EXAM
NAME : SSC Examination 2016 TOTAL
MARKS : 200

CANDIDATE NAME : www.qmaths.in
EXAM START TIME : 16:15:00
EXAM DURATION : 01:15 Hrs
TOTAL NO OF QUESTIONS : 100

Question 1. Select the related word/letters/numbers from the given alternatives:

दिये गये विकल्पों में से संबन्धित शब्द/अक्षरों/संख्या को चुनिए।

Book:Pages::Wall:?

पुस्तक : पृष्ठ :: दीवार : ?

Options:

1) SAND

रेत

2) CEMENT

सीमेंट

3) BRICKS

ईंट

4) STONES

पत्थर

Correct Answer: BRICKS

ईंट

Candidate Answer: BRICKS

ईंट

Question 2. Select the related word/letters/numbers from the given alternatives:

दिये गये विकल्पों में से संबन्धित शब्द/अक्षरों/संख्या को चुनिए।

LNPQ : ACEF :: TUXY : ?

Options:

1) IMKL

2) IKMO

3) IKMN

4) PKLR

Correct Answer: IKMN

Candidate Answer: IKMN

Question 3. Select the related word/letters/numbers from the given alternatives:

दिये गये विकल्पों में से संबन्धित शब्द/अक्षरों/संख्या को चुनिए।

4:20::8: ?

Options:

1) 74

2) 70

3) 72

4) 78

Correct Answer: 72

Candidate Answer: 72



Question 4.

Downloaded from www.qmaths.in

For the following questions

Find the odd word/letters/number from the given alternatives.

(A) Bud (B) Branch (C) Leaf (D) Plant

दिए गए विकल्पों में से विषम शब्द/संख्या/अक्षर चुनिए।

(A) कली (B) शाखा (C) पत्ती (D) पौधा

Options:

1) A

2) B

3) C

4) D

Correct Answer: D

Candidate Answer: D

Question 5.

For the following questions

Find the odd word/letters/number from the given alternatives.

दिए गए विकल्पों में से विषम शब्द/संख्या/अक्षर युग्म चुनिए।

(A) ABD (B) FGI (C) LMO (D) STU

Options:

1) A

2) B

3) C

4) D

Correct Answer: D

Candidate Answer: D

Question 6.

For the following questions

Find the odd word/letters/number pair from the given alternatives.

दिए गए विकल्पों में से विषम शब्द/संख्या/अक्षर/संख्या युग्म चुनिए।

(A) 24-42 (B) 36-63 (C) 37-73 (D) 35-51

Options:

1) A

2) B

3) C

4) D

Correct Answer: D

Candidate Answer: D

Question 7. Arrange the following words as per order in the dictionary.
Downloaded from www.qmaths.in

निम्नलिखित शब्दों को शब्दकोश के क्रम के अनुसार व्यवस्थित कीजिये।

1. Manifest 2. Meticulous 3. Meridian 4. Merchant

Options:

1) 1,4,3,2

2) 2,1,4,3

3) 1,3,2,4

4) 2,3,4,1

Correct Answer: 1,4,3,2

Candidate Answer: 1,4,3,2

Question 8. Which one set letters when sequentially placed at the gaps in the given letter series shall complete it?

अक्षरों का कौन-सा समूह खाली स्थानों पर क्रमवार रखने से दी गई अक्षर श्रृंखला को पूरा करेगा ?

M__OMMN__M__NOMMN__M

Options:

1) O N M O

2) N O M O

3) M O N M

4) N N M O

Correct Answer: N O M O

Candidate Answer: N O M O

Question 9. Which number will complete the series?
Downloaded from www.qmaths.in

निम्नलिखित में से श्रेणी को कौन-सा अंक पूर्ण करेगा?

14, 27, 52, 101, 198, ?

Options:

1) 381

2) 395

3) 391

4) 394

Correct Answer: 391

Candidate Answer: 391

Question 10. M is son of P, Q is the grand-daughter of O, who is the husband of P. How is M related to O?

M, P का पुत्र है, Q, O की पौत्री है, जो कि P का पति है। M का O से क्या सम्बन्ध है ?

Options:

1) Son

पुत्र

2) Daughter

पुत्री

3) Mother

माता

4) Father

पिता

Correct Answer: Son

पुत्र

Candidate Answer: Son

पुत्र

Question 11. Ramesh is richer than Satish but Jaya is less rich than Ramesh. Ram is less rich than Jaya but richer than Satish, but is not as rich as Ramesh. Ramesh is less rich than Navin. The richest amongst them is?

रमेश, सतीश से अधिक अमीर है किन्तु जया, रमेश से कम अमीर है। राम, जया से कम अमीर है किन्तु सतीश से अधिक अमीर है लेकिन वह रमेश जितना अमीर नहीं है। रमेश, नवीन से कम अमीर है। उनमें से सबसे अधिक अमीर कौन है?

Options:

1) Ramesh

रमेश

2) Satish

सतीश

3) Navin

नवीन

4) Jaya

जया

Correct Answer: Navin

नवीन

Candidate Answer: Navin

नवीन

Question 12. From the given alternative words, select the word which cannot be formed using the letters of the given word:

निम्नलिखित विकल्पों में से वह शब्द चुनिये जो दिए गए शब्द के अक्षरों का प्रयोग करके नहीं बनाया जा सकता है:

CARPENTER

Options:

- 1) NECTAR
- 2) CARPET
- 3) PAINTER
- 4) REPENT

Correct Answer: PAINTER

Candidate Answer: PAINTER

Question 13.If FRIEND is coded as HUMJTK, how can CANDLE be written in that code?

यदि FRIEND को किसी कोड भाषा में HUMJTK लिखा जाता है तो उसी कोड में CANDLE को कैसे लिखा जाएगा ?

Options:

- 1) EDRIRL
- 2) ESJFME
- 3) DCQHQB
- 4) DEQJQM

Correct Answer: EDRIRL

Candidate Answer: EDRIRL

Question 14.If A denotes $-$, C denotes \times , D denotes \div , E denotes $+$, then $14C3A12E4D2=$?

यदि A, $-$ को प्रदर्शित करता है, C, \times को प्रदर्शित करता है, D, \div को प्रदर्शित करता है, E, $+$ को प्रदर्शित करता है, तो $14C3A12E4D2=$?



Options:

1) 6

2) 17

3) 28

4) 32

Correct Answer: 32

Candidate Answer: 32

Question 15. If $879 = 8$,
 $625 = 1$,
 $586 = 9$,
then $785 = ?$

यदि $879 = 8$,
 $625 = 1$,
 $586 = 9$ हो,
तो $785 = ?$

Qmaths.in
SSC | IBPS | RAILWAYS | LIC | SIDBI

Options:

1) 6

2) 7

3) 8

4) 9

Correct Answer: 6

Candidate Answer: 6

Question 16. Find the missing number from the given alternatives:

दिए गए विकल्पों में से लुप्त संख्या ज्ञात कीजिये।

8	7	6
7	6	5
6	5	4
90	65	?

Options:

1) 54

2) 44

3) 34

4) 26

Correct Answer: 44

Candidate Answer: 44

Question 17. Sham goes to his friend's house that is straight 10 Km from his house. On his way back, he takes a right turn and walks 2 Km and again takes a right turn and walks for 10 Km before he takes a right turn again. How much distance is Sham still away from his house?

श्याम अपने मित्र के घर जाता है जो उसके घर से सीधा 10 कि.मी. दूर है। वापस लौटते समय वह दाएं मुड़कर 2 कि.मी. चलता है और दाएं मुड़ जाता है। फिर से दाएं मुड़ने से पहले वह 10 कि.मी. चलता है। श्याम अभी भी अपने घर से कितनी दूरी पर है ?

Options:

1) 10 Km

10 कि.मी.

2) 8 Km

8 कि.मी.

3) 12 Km

12 कि.मी.

4) 2 Km

2 कि.मी.

Correct Answer: 2 Km

2 कि.मी.

Candidate Answer: 2 Km

2 कि.मी.

Question 18. One or two statements are given followed by two conclusions, I and II. You have to consider the statement to be true, even if it seems to be at variance from commonly known facts. You are to decide which of the given conclusions/assumptions can definitely be drawn from the given statement. Indicate your answer.

SSC | IBPS | RAILWAYS | LIC | SIDBI

Statement: All boys are tall.

Rajiv is a boy.

Conclusion I: Rajiv is tall.

II: Rajiv is not tall.

नीचे एक या दो वक्तव्य दिए गए हैं जिसके आगे दो निष्कर्ष/मान्यताएँ, I और II निकाले गये हैं। आपको विचार करना है कि वक्तव्य सत्य है चाहे वह सामान्यतः ज्ञात तथ्यों से भिन्न प्रतीत होता हो। आपको निर्णय करना है कि दिए गए वक्तव्य में से कौन-सा निश्चित रूप से सही निष्कर्ष/मान्यता निकाला जा सकता है। अपने उत्तर को निर्दिष्ट कीजिए।

कथन : सभी लड़के लम्बे हैं। राजीव लड़का है।

निष्कर्ष: I- राजीव लंबा है।

निष्कर्ष: II- राजीव लंबा नहीं है।

Options:

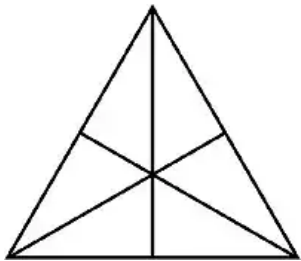
- 1) Only conclusion I follows
केवल निष्कर्ष I सही है।
- 2) Only conclusion II follows
केवल निष्कर्ष II सही है।
- 3) Both conclusion I and conclusion II follow
निष्कर्ष I और निष्कर्ष II दोनों सही हैं।
- 4) Neither conclusion I nor conclusion II follows
न निष्कर्ष I सही है और न निष्कर्ष II।

Correct Answer: Only conclusion I follows
केवल निष्कर्ष I सही है।

Candidate Answer: Only conclusion I follows
केवल निष्कर्ष I सही है।

Question 19. How many triangles are there in the question figure?

दिए गए प्रश्न चित्र में कितने त्रिभुज हैं ?



Options:

- 1) 6
- 2) 10
- 3) 12
- 4) 16

Correct Answer: 16

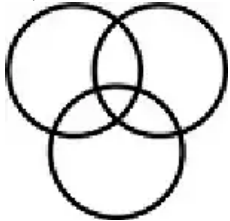
Candidate Answer: 16

Question 20. Which of the following diagrams represent the relationship between Awards, Pulitzer Prize and Oscars?

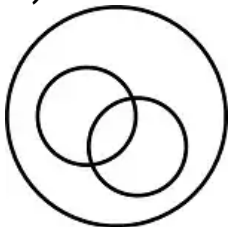
निम्नलिखित में से कौन-सा आरेख पुरस्कार, पुलित्जर पुरस्कार और ऑस्कर के बीच संबंध दर्शाता है ?

Options:

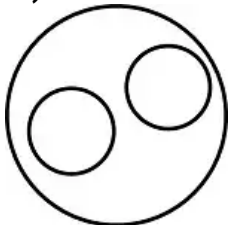
1)



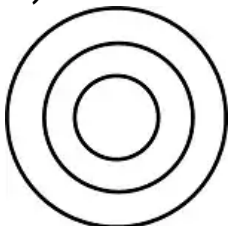
2)



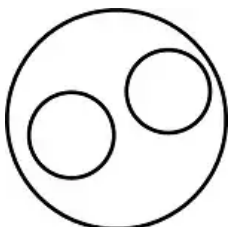
3)



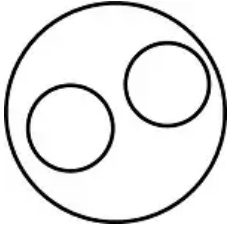
4)



Correct Answer:

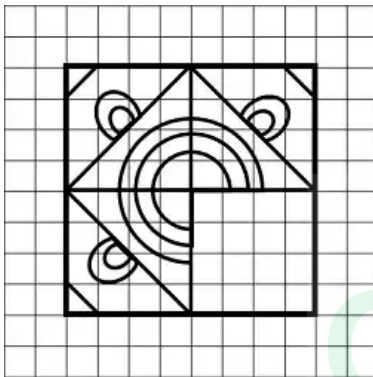


Qmaths.in
SSC | IBPS | RAILWAYS | LIC | SIDBI



Question 21. Which answer figure will complete the pattern in the question figure?

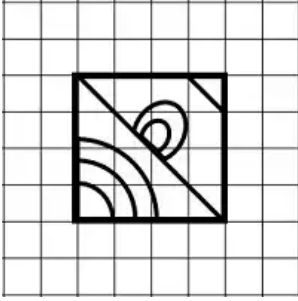
कौन-सी उत्तर आकृति प्रश्न आकृति के पैटर्न को पूरा करेगी ?



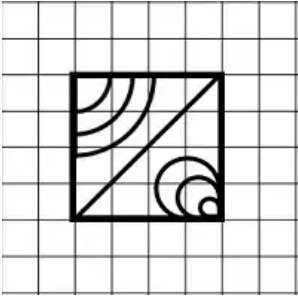
[Qmaths.in](http://www.qmaths.in)
SSC | IBPS | RAILWAYS | LIC | SIDBI

Options:

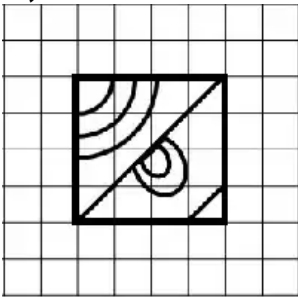
1)



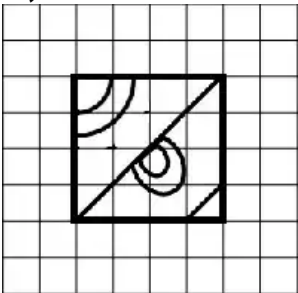
2)



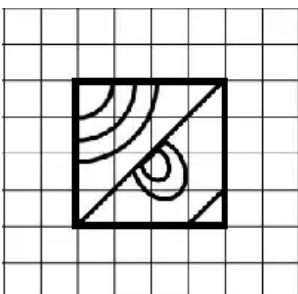
3)



4)

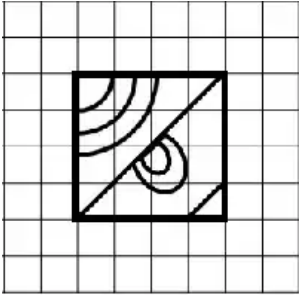


Correct Answer:



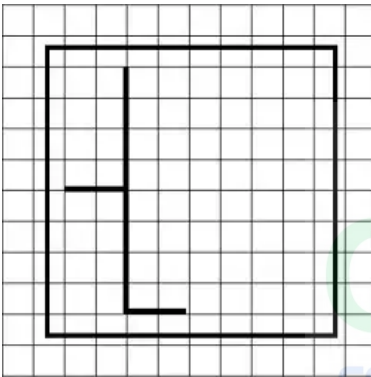
Qmaths.in
SSC | IBPS | RAILWAYS | LIC | SIDBI

Candidate Answer.



Question 22. From the given answer figures, select the one in which the question figure is hidden/embedded.

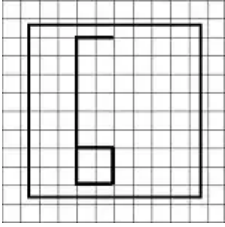
दी गई उत्तर आकृतियों में से उत्तर आकृति को चुनिए जिसमें प्रश्न आकृति निहित है।



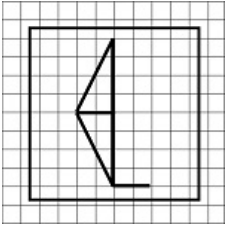
Qmaths.in
SSC | IBPS | RAILWAYS | LIC | SIDBI

Options:

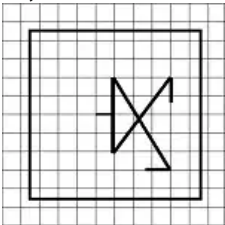
1)



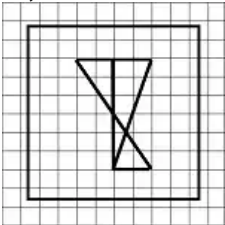
2)



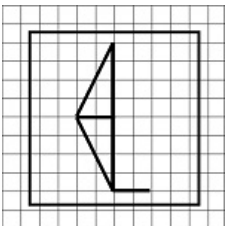
3)



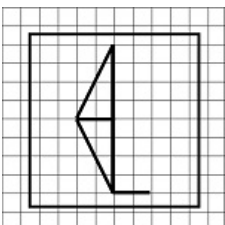
4)



Correct Answer:



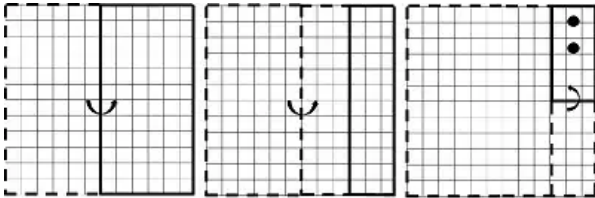
Candidate Answer:



Qmaths.in
SSC | IBPS | RAILWAYS | LIC | SIDBI

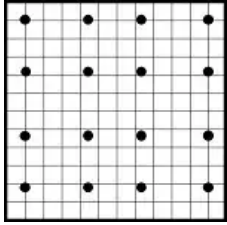
Question 23. A piece of paper is folded and cut as shown below in the question figures. From the given answer figures, indicate how it will appear when opened.

प्रश्न आकृतियों में दिखाए अनुसार कागज को मोड़कर काटने तथा खोलने के बाद वह किस उत्तर आकृति जैसा दिखाई देगा ?

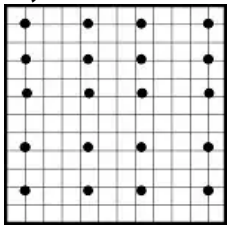


Options:

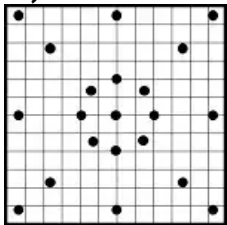
1)



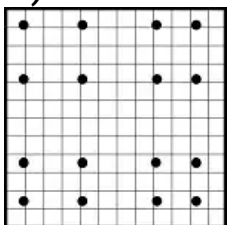
2)



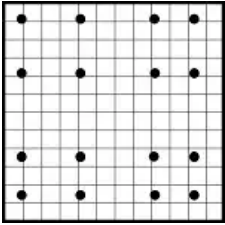
3)



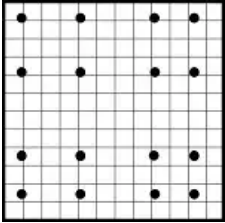
4)



Correct Answer: [Downloaded from www.qmaths.in](http://www.qmaths.in)

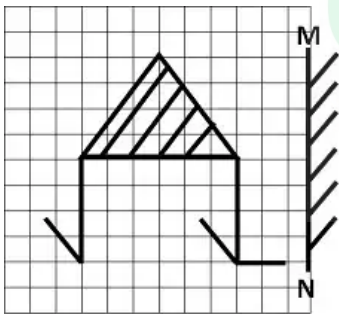


Candidate Answer:



Question 24. If a mirror is placed on the line MN, then which of the answer figures is the right image of the given figure?

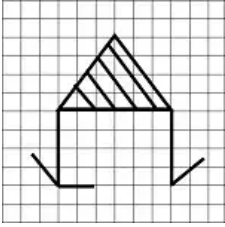
यदि एक दर्पण को MN रेखा पर रखा जाये तो दी गई उत्तर आकृतियों में से कौन-सी आकृति प्रश्न आकृति की सही प्रतिबिम्ब होगी ?



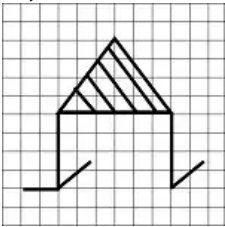
Qmaths.in
SSC | IBPS | RAILWAYS | LIC | SIDBI

Options:

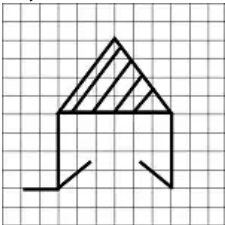
1)



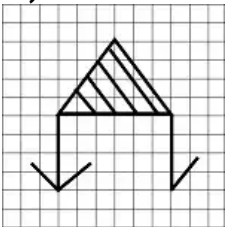
2)



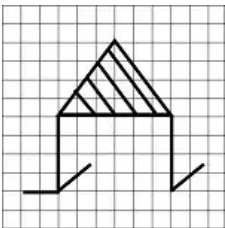
3)



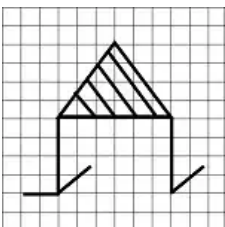
4)



Correct Answer:



Candidate Answer:



Qmaths.in
SSC | IBPS | RAILWAYS | LIC | SIDBI

Question 25. In this question, the sets of numbers given in the alternatives are represented. The columns and rows of Matrix I are numbered from 0 to 4 and that of Matrix II are numbered from 5 to 9. A letter from these matrices can be represented first by its row and next by its column, e.g., D can be represented by 04, 12, etc., and 'I' can be represented by 65, 79, etc. Similarly you have to identify the set for the word 'BANK'.

एक शब्द केवल एक संख्या-समूह द्वारा दर्शाया गया है, जैसे कि विकल्पों में से किसी एक में दिया गया है। विकल्पों में दिए गए संख्या समूह अक्षरों के दो वर्गों द्वारा दर्शाए गए हैं, जैसे कि नीचे दिए गए दो आव्यूहों में हैं। आव्यूह I के स्तंभ और पंक्ति की संख्या 0 से 4 और आव्यूह II की 5 से 9 दी गई है। इन आव्यूहों से एक अक्षर को पहले उसकी पंक्ति और बाद में स्तम्भ संख्या द्वारा दर्शाया जा सकता है। उदाहरण के लिए 'D' को 04, 12 आदि द्वारा दर्शाया जा सकता है तथा 'I' को 65, 79 आदि द्वारा दर्शाया जा सकता है। इसी तरह से आपको दिए हुए शब्द 'BANK' के लिए समूह को पहचानना है।

Matrix-I						Matrix-II					
	0	1	2	3	4		5	6	7	8	9
0	B	N	G	L	D	5	A	I	K	O	R
1	G	L	D	B	N	6	I	K	O	R	A
2	D	B	N	G	L	7	K	O	R	A	I
3	N	G	L	D	B	8	O	R	A	I	K
4	L	D	B	N	G	9	R	A	I	K	O

Options:

1) 42,69,14,98

2) 00,55,33,57

3) 21,67,30,86

4) 42,78,43,58

Correct Answer: 42,69,14,98

Candidate Answer: 42,69,14,98

Question 26. Which is the heaviest metal among the following?

निम्नलिखित में से कौन-सी धातु सबसे भारी होता है ?

Options:

1) Gold

सोना

2) Silver

चाँदी

3) Iron

लोहा

4) Copper

तांबा

Correct Answer: Gold

सोना

Candidate Answer: Iron

लोहा

Question 27. Which of the following uses the spawn mechanism to duplicate itself ?

इनमें से कौन स्वयं को डुप्लिकेट करने के लिए स्पॉन मैकेनिज्म अपनाता है ?

Options:

1) Trojan horse

ट्रोजन हॉर्स

2) Worm

वर्म

3) Keystroke logger

की-स्ट्रोक लॉगर

4) Logic bomb

लॉजिक बोम्ब

Correct Answer: Worm

वर्म

Candidate Answer: Trojan horse

ट्रोजन हॉर्स

Question 28. Sun appears red in colour at sunrise and sunset due to

सूर्योदय और सूर्यास्त के समय सूर्य का रँग लाल क्यों दिखाई देता है ?

Options:

- 1) the fact that sun emits only red colour at that time
क्योंकि उस समय सूर्य केवल लाल रँग उत्सर्जित करता है
- 2) red light having longer wave length scatters away
लाल प्रकाश का तरंग-दैर्ध्य अधिक होने के कारण प्रकीर्णन अधिक होता है
- 3) that sun comes out of the mountains
सूर्य पर्वतों में से निकलता है
- 4) that all other colours scatter away except red
लाल को छोड़ कर अन्य सभी रंग प्रकीर्णित हो जाते है

Correct Answer: that all other colours scatter away except red
लाल को छोड़ कर अन्य सभी रंग प्रकीर्णित हो जाते है

Candidate Answer: red light having longer wave length scatters away
लाल प्रकाश का तरंग-दैर्ध्य अधिक होने के कारण प्रकीर्णन अधिक होता है

Question 29. What is the main purpose of white blood corpuscles?

रक्त में श्वेत कणों का मुख्य प्रयोजन क्या है ?

Options:

- 1) to carry nutrients
पोषक तत्व ले जाना
- 2) to combat infection
संक्रमण से संघर्ष करना
- 3) to carry oxygen
ऑक्सीजन ले जाना
- 4) to give strength
शक्ति प्रदान करना

Correct Answer: to combat infection
संक्रमण से संघर्ष करना

Candidate Answer: to combat infection
संक्रमण से संघर्ष करना

Question 30. The layer where the decrease in temperature with increasing altitude is totally absent is

वह परत जहाँ ऊँचाई बढ़ने के साथ-साथ तापमान में बिल्कुल कमी नहीं होती ?

Options:

1) Troposphere

क्षोभमंडल

2) Ionosphere

आयनमंडल

3) Stratosphere

समतापमंडल

4) Mesosphere

मध्यमंडल

Correct Answer: Stratosphere

समतापमंडल

Candidate Answer: Ionosphere

आयनमंडल

Question 31. At hill stations, the boiling point of water will be

पर्वतीय क्षेत्रों में जल का क्वथनांक क्या होगा ?

Options:

1) same as at sea level

वही जो समुन्द्र तल पर होता है

2) less than that at sea level

जितना समुन्द्र तल पर होता है, उससे कम

3) more than that at sea level

जितना समुन्द्र तल पर होता है, उससे अधिक

4) equal to the melting point of ice

बर्फ के गलनांक के बराबर

Correct Answer: less than that at sea level

जितना समुन्द्र तल पर होता है, उससे कम

Candidate Answer: same as at sea level

वही जो समुन्द्र तल पर होता है

Question 32. Gandhiji's Satyagraha meant an attachment to the following two elements

गाँधीजी के 'सत्याग्रह' का निम्नलिखित में से किन्हीं दो से जुड़ाव है ?

Options:

1) Knowledge and religion

ज्ञान और धर्म

2) Truth and non-violence

सच्चाई और अहिंसा

3) Truth and chastity

सच्चाई और उदारता

4) Love of motherland and hate for colonial masters

मातृभूमि के प्रति प्यार और औपनिवेशिक स्वामियों के प्रति घृणा

Correct Answer: Truth and non-violence

सच्चाई और अहिंसा

Candidate Answer: Truth and non-violence

सच्चाई और अहिंसा

Qmaths.in
SSC | IBPS | RAILWAYS | LIC | SIBBI

Question 33. What do you mean by 'Density of Population'?

जनसंख्या घनत्व' से आप क्या समझते हैं ?

Options:

1) Ratio of people living below poverty line to total population

गरीबी रेखा से नीचे रहने वाले लोगों का कुल जनसंख्या से अनुपात

2) Number of persons live per square kilometre

प्रति वर्ग कि.मी. में रहने वाले लोगों की संख्या

3) Number of persons in a city

किसी शहर में रहने वाले व्यक्तियों की संख्या

4) Number of persons living per kilometre

प्रति कि.मी. रहने वाले व्यक्तियों की संख्या

Correct Answer: Number of persons live per square kilometre

प्रति वर्ग कि.मी. में रहने वाले लोगों की संख्या

Candidate Answer: Number of persons live per square kilometre

प्रति वर्ग कि.मी. में रहने वाले लोगों की संख्या

Question 34. Which of the following is not a feature of a capitalist economy?

निम्नलिखित में से कौन-सी 'पूँजीवादी अर्थव्यवस्था' की विशेषता नहीं है ?

Options:

- 1) Right to private property
निजी सम्पत्ति का अधिकार
- 2) Existence of competition
प्रतियोगिता होना
- 3) Service motive
सेवा-प्रयोजन
- 4) Freedom of choice to consumers
उपभोक्ताओं को चुनाव की स्वतन्त्रता

Correct Answer: Service motive
सेवा-प्रयोजन

Candidate Answer: Service motive
सेवा-प्रयोजन

Qmaths.in
SSC | IBPS | RAILWAYS | LIC | SIDBI

Question 35. Sunita Williams is a

सुनीता विलियम्स कौन है ?

Options:

- 1) Astronaut
अंतरिक्ष यात्री
- 2) Missile scientist
मिसाइल विज्ञानी
- 3) Nuclear scientist
नाभिकीय वैज्ञानिक
- 4) Astro physicist
अंतरिक्ष भौतिक-विज्ञानी

Correct Answer: Astronaut
अंतरिक्ष यात्री

Candidate Answer: Astronaut
अंतरिक्ष यात्री

Question 36. Who is the writer of the famous book 'Kabuliwala'?

सुप्रसिद्ध पुस्तक ' काबुलीवाला ' के लेखक कौन हैं?

Options:

1) Bankim Chandra Chatterjee

बंकिम चन्द्र चटर्जी

2) Ravindra Nath Tagore

रविन्द्र नाथ टैगोर

3) Munshi Prem Chand

मुन्शी प्रेम चन्द

4) Khan Abdul Gaffar Khan

खान अब्दुल गफ्फार खान

Correct Answer: Ravindra Nath Tagore

रविन्द्र नाथ टैगोर

Candidate Answer: Munshi Prem Chand

मुन्शी प्रेम चन्द

Question 37. The term 'bully' is connected with which sport ?

बुली' शब्द का प्रयोग निम्नलिखित में से कौन से खेल में किया जाता है ?

Options:

1) Cricket

क्रिकेट

2) Hockey

हॉकी

3) Badminton

बैडमिन्टन

4) Tennis

टेनिस

Correct Answer: Hockey

हॉकी

Candidate Answer: Hockey

हॉकी

Question 38. Who amongst the following wrestlers has been the recipient of the Rajiv Gandhi Khel Ratna Award?

निम्नलिखित में से किस पहलवान को 'राजीव गाँधी खेल रत्न पुरस्कार' दिया गया था ?

Options:

1) Vijender Singh

विजेन्द्र सिंह

2) Sushil Kumar

सुशील कुमार

3) Anand Kumar Singh

आनन्द कुमार सिंह

4) Zoravar Singh Faujdar

ज़ोरावर सिंह फौजदार

Correct Answer: Sushil Kumar

सुशील कुमार

Candidate Answer: Sushil Kumar

सुशील कुमार

Question 39. Siderosis is a disease caused by the inhalation of

लोहमयता एक रोग है जो श्वास के साथ निम्नलिखित में से क्या अन्दर लेने से होता है?

Options:

1) silica dust

सिलिका धूल

2) iron dust

लौह-धूल

3) zinc dust

जस्त (जिंक) धूल

4) coal dust

कोयला-धूल

Correct Answer: iron dust

लौह-धूल

Candidate Answer: iron dust

लौह-धूल

Question 40. The term "Doab" means

दोआब का क्या मतलब होता है?

Options:

1) a land between two mountains

दो पर्वतों के बीच की भूमि

2) a land between two lakes

दो झीलों के बीच की भूमि

3) a land between two rivers

दो नदियों के बीच की भूमि

4) a land between two seas

दो समुद्रों के बीच की भूमि

Correct Answer: a land between two rivers

दो नदियों के बीच की भूमि

Candidate Answer: a land between two rivers

दो नदियों के बीच की भूमि

Question 41. Which of the following is used as anaesthetics?

अनेस्थेटिक्स के रूप में निम्नलिखित में से क्या प्रयोग किया जाता है ?

Options:

1) N_2

2) N_2O

3) CH_4

4) CO_2

Correct Answer: N_2O

Candidate Answer: N_2O

Question 42. Clove is obtained from

लौंग किससे प्राप्त होती है ?

Options:

1) Root

जड़

2) Stem

तना

3) Leaves

पत्तियाँ

4) Flower buds

फूल की कली

Correct Answer: Flower buds

फूल की कली

Candidate Answer: Flower buds

फूल की कली

Question 43. What is Dakshin Gangotri ?

दक्षिण गंगोत्री क्या है ?

Options:

1) River valley in Andhra Pradesh

आन्ध्र प्रदेश में नदी घाटी

2) Unmanned station located in Antarctica

अंटार्कटिका में स्थित स्वचालित स्टेशन

3) Second source of River Ganga

गंगा नदी का दूसरा स्रोत

4) Island in the Indian Ocean

भारतीय समुद्र में स्थित द्वीप

Correct Answer: Unmanned station located in Antarctica

अंटार्कटिका में स्थित स्वचालित स्टेशन

Candidate Answer: River valley in Andhra Pradesh

आन्ध्र प्रदेश में नदी घाटी

Question 44. Japan is called the 'Land of the rising sun' because

जापान को 'लैंड ऑफ द राईजिंग सन' क्यों कहा जाता है ?

Options:

1) Sun rises there as soon as it sets

सूर्यास्त होते ही सूर्योदय हो जाता है

2) Sun always remains in the eastern part of the sky throughout the day in Japan

जापान में दिन भर सूर्य आकाश में पूर्व दिशा में ही रहता है

3) Japan being the Eastern most country in the world, it has the earliest sunrise

चूंकि जापान विश्व में ऐसा देश है जो पूर्व में सबसे अंतिम छोर पर है, अतः वहाँ सूर्योदय सबसे पहले होता है

4) The rays of the sun get reflected from the waters of the sea and make the sunrise beautiful in Japan

सूर्य की किरणें समुन्द्र के जल से अपवर्तित हो कर जापान में सूर्योदय को अत्याधिक सुन्दर बना देती हैं

Correct Answer: Japan being the Eastern most country in the world, it has the earliest sunrise

चूंकि जापान विश्व में ऐसा देश है जो पूर्व में सबसे अंतिम छोर पर है, अतः वहाँ सूर्योदय सबसे पहले होता है

Candidate Answer: Japan being the Eastern most country in the world, it has the earliest sunrise

चूंकि जापान विश्व में ऐसा देश है जो पूर्व में सबसे अंतिम छोर पर है, अतः वहाँ सूर्योदय सबसे पहले होता है

Question 45. Who was the first Englishman to appear in the Mughal Court during Jahangir's reign?

जहाँगीर के काल में मुगल दरबार में आने वाला पहला अंग्रेज कौन था ?

Options:

- 1) Paul Canning
पोल कैनिंग
- 2) Captain William Hawkins
कैप्टन विलियम हॉकिन्स
- 3) William Edward
विलियम एडवार्ड
- 4) Ralph Fitch
राल्फ फिच

Correct Answer: Captain William Hawkins
कैप्टन विलियम हॉकिन्स

Candidate Answer: Captain William Hawkins
कैप्टन विलियम हॉकिन्स

Question 46. The 'Narmada Water Dispute Tribunal' was constituted to resolve the water sharing between

नर्मदा जल विवाद न्यायाधिकरण' का किन राज्यों के बीच जल के बँटवारे को सुलझाने के लिए गठन किया गया था ?

Options:

- 1) Gujarat and Rajasthan
गुजरात और राजस्थान
- 2) Gujarat and Maharashtra
गुजरात और महाराष्ट्र
- 3) Gujarat, Maharashtra, Rajasthan and Madhya Pradesh
गुजरात, महाराष्ट्र, राजस्थान और मध्य प्रदेश
- 4) Gujarat and Daman and Diu
गुजरात तथा दमन और दीव

Correct Answer: Gujarat, Maharashtra, Rajasthan and Madhya Pradesh

गुजरात, महाराष्ट्र, राजस्थान और मध्य प्रदेश

Candidate Answer: Gujarat and Maharashtra
गुजरात और महाराष्ट्र

Question 47. In which way the President can assign any of the functions of the Union Government to the State Government ?

राष्ट्रपति संघ सरकार का कोई भी कार्य निम्नलिखित में से किस प्रकार से, राज्य सरकार को सौंप सकते हैं ?

Options:

1) In his discretion

अपने विवेक से

2) In consultation with the Chief Justice of India

भारत के मुख्य न्यायाधीश के परामर्श से

3) In consultation with the Government of the State

राज्य सरकार से परामर्श करके

4) In consultation with the State Governor

राज्य के राज्यपाल से परामर्श करके

Correct Answer: In consultation with the Government of the State

राज्य सरकार से परामर्श करके

Candidate Answer: In consultation with the State Governor

राज्य के राज्यपाल से परामर्श करके

qmaths.in

SSC | IBPS | RAILWAYS | LIC | SIDBI

Question 48. Where is the Indian National Rail Museum situated?

राष्ट्रीय रेल संग्रहालय' कहाँ स्थित है ?

Options:

1) Delhi

दिल्ली

2) Uttar Pradesh

उत्तर प्रदेश

3) Punjab

पंजाब

4) Himachal Pradesh

हिमाचल प्रदेश

Correct Answer: Delhi

दिल्ली

Candidate Answer: [NOT ANSWERED]

Question 49. Which of the following is not true about Ajanta Caves?

निम्नलिखित में से क्या अजन्ता गुफाओं के संबंध में सही नहीं है?

Options:

1) They are in Maharashtra

वे महाराष्ट्र में स्थित हैं

2) They are decorated with Buddhist Art

वे बौद्ध कला से सज्जित हैं

3) They depict the techniques used in Ancient India

वे प्राचीन भारत में प्रयुक्त तकनीकों को दर्शाती हैं

4) They do not contain paintings of flora and fauna

उनमें फूल-पत्तियों के चित्र नहीं हैं

Correct Answer: They depict the techniques used in Ancient India

वे प्राचीन भारत में प्रयुक्त तकनीकों को दर्शाती हैं

Candidate Answer: They depict the techniques used in Ancient India

वे प्राचीन भारत में प्रयुक्त तकनीकों को दर्शाती हैं

Question 50. Who was the founder of Arya Samaj?

आर्य-समाज के संस्थापक कौन थे ?

Options:

1) Acharya Narendra Dev

आचार्य नरेन्द्र देव

2) Dayanand Saraswati

दयानन्द सरस्वती

3) Raja Ram Mohan Roy

राजा राम मोहन राय

4) Acharya Vinoba Bhave

आचार्य विनोबा भावे

Correct Answer: Dayanand Saraswati

दयानन्द सरस्वती

Candidate Answer: Dayanand Saraswati

दयानन्द सरस्वती

Question 51. A, B and C can work together for Rs. 550/- A and B together are to do $\frac{7}{11}$ of the work. The share of C should be?

A, B और C मिलकर किसी काम को Rs. 550 में पूरा करते हैं। A और B को मिलकर काम का $\frac{7}{11}$ भाग पूरा करना है। C का हिस्सा कितना होगा ?

Options:

1) Rs. 200

2) Rs. 300

3) Rs. 400

4) Rs. 450

Correct Answer: Rs. 200

Candidate Answer: Rs. 200

Question 52. In ΔABC , the height CD intersects AB at D . The midpoints of AB and BC are P and Q respectively. If $AD = 8$ cm and $CD = 6$ cm, then the length of PQ is?

ΔABC में, ऊँचाई CD , AB को D पर काटती है। AB और BC के मध्य बिन्दु क्रमशः P और Q है। यदि $AD = 8$ से.मी. और $CD = 6$ से.मी. हो, तो PQ की लम्बाई क्या है ?

Options:

1) 3 cm

3 से.मी.

2) 7 cm

7 से.मी.

3) 9 cm

9 से.मी.

4) 5 cm

5 से.मी.

Correct Answer: 5 cm

5 से.मी.

Candidate Answer: 3 cm

3 से.मी.

Question 53. The price of a chair is Rs. 500. It has been sold at two successive discounts of 10% each. What is its selling price?

एक कुर्सी की कीमत Rs. 500 है। इसे 10% की दो क्रमागत छूटों पर बेचा गया। उसका विक्रय मूल्य क्या है ?

Options:

1) Rs. 400

2) Rs. 405

3) Rs. 415

4) Rs. 425

Correct Answer: Rs. 405

Candidate Answer: Rs. 405

Question 54. The percent profit made when an article is sold for Rs. 78 is twice as much as when it is sold for Rs. 69, the cost price of the article is?

जब कोई वस्तु Rs. 78 में बेची जाती है तो उसका लाभ उसी वस्तु को Rs. 69 में बेचने पर होने वाले लाभ से दुगुना है। वस्तु का लागत मूल्य क्या है ?

Options:

1) Rs. 60

2) Rs. 51

3) Rs. 55.50

4) Rs. 70

Correct Answer: Rs. 60

Candidate Answer: Rs. 60

Question 55. In a Village panchayat society 574 names are enlisted as 'below poverty level'. If 14% of the villagers are below poverty level, the total number of villagers is?

एक ग्राम पंचायत संस्था में 574 नाम “गरीबी रेखा से नीचे” की सूची में शामिल है। यदि गाँव के 14% लोग गरीबी रेखा से नीचे है, तो गाँव वालों की कुल संख्या कितनी है ?

Options:

1) 4100

2) 4200

3) 4000

4) 3800

Correct Answer: 4100

Candidate Answer: 4100

Question 56. A train 240 meters in length crosses a telegraph post in 16 seconds. The speed of the train is?

240 मी. लम्बी ट्रेन एक टेलीग्राफ खंभे को 16 सेकण्ड में पार करती है। ट्रेन की गति कितनी है?

Options:

1) 50 Km/hr
50 कि.मी./घंटा

2) 52 Km/hr
52 कि.मी./घंटा

3) 54 Km/hr
54 कि.मी./घंटा

4) 56 Km/hr
56 कि.मी./घंटा

Correct Answer: 54 Km/hr

54 कि.मी./घंटा

Candidate Answer: 54 Km/hr

54 कि.मी./घंटा

Question 57. If $a^2 + 1 = a$, then the value of a^3 is

यदि $a^2 + 1 = a$ हो, तो a^3 का मान क्या है ?

Options:

1) 0

2) 1

3) -1

4) 2

Correct Answer: -1

Candidate Answer: -1

Question 58.

If $x + 3y = -3x + y$, then $\frac{x^2}{2y^2}$ is equal to

यदि $x + 3y = -3x + y$ हो, तो $\frac{x^2}{2y^2}$ का मान बताएं।

Options:

1) $\frac{1}{8}$

2) $\frac{1}{2}$

3) $\frac{1}{4}$

4) 4

Correct Answer: $\frac{1}{8}$

Candidate Answer: $\frac{1}{8}$

Question 59. From an external point two tangents to a circle are drawn. The chord passing through the points of contact subtends an angle 72° at the centre. The angle between the tangents is?

एक बाहरी बिन्दु से किसी वृत्त की दो स्पर्श रेखाएँ खींची गई है। संपर्क बिन्दुओं से होकर गुजरने वाली जीवा 72° कोण को केन्द्र पर आंतरित करती है। स्पर्श रेखाओं के बीच कोण कितने माप का होगा ?

Options:

1) 36°

2) 72°

3) 108°

4) 144°

Correct Answer: 108°

Candidate Answer: 108°

Question 60. Length of three line segments is given. Is construction of a triangle possible with the segments in the given cases?

तीन लाईन खण्डों की लम्बाई दी गई है। किस स्थिति में खण्डों से त्रिभुज का निर्माण संभव है ?

Options:

1) 8 cm, 7 cm, 18 cm

8 से.मी., 7 से.मी., 18 से.मी.

2) 8 cm, 15 cm, 17 cm

8 से.मी., 15 से.मी., 17 से.मी.

3) 10 cm, 6 cm, 4 cm

10 से.मी., 6 से.मी., 4 से.मी.

4) 8 cm, 10 cm, 20 cm

8 से.मी., 10 से.मी., 20 से.मी.

Correct Answer: 8 cm, 15 cm, 17 cm

8 से.मी., 15 से.मी., 17 से.मी.

Candidate Answer: 8 cm, 15 cm, 17 cm
8 से.मी., 15 से.मी., 17 से.मी.

Question 61.If $\sin\theta + \operatorname{cosec}\theta = 2$, then the value of $\sin^{-7}\theta + \operatorname{cosec}^7\theta$ is

यदि $\sin\theta + \operatorname{cosec}\theta = 2$ हो तो $\sin^{-7}\theta + \operatorname{cosec}^7\theta$ का मान क्या है ?

Options:

1)
 2^7

2)
 2^{-7}

3) 2

4)
 2^{-1}

Correct Answer: 2

Candidate Answer: 2

Qmaths.in
SSC | IBPS | RAILWAYS | LIC | SIDBI

Question 62.A man has some hens and some cows. If the total number of heads of hens and cows together is 50 and the number of feet of hens and cows together is 142, then the number of cows is

एक आदमी के पास कुछ मुर्गियाँ और कुछ गाय हैं। यदि मुर्गियों और गायों के सिरों की कुल संख्या 50 है और मुर्गियों एवं गायों के पैरों की संख्या 142 है, तो गायों की संख्या कितनी है ?

Options:

1) 21

2) 25

3) 27

4) 29

Correct Answer: 21

Question 63. In a class, average height of all students is 'a' cms. Among them, average height of 10 students is 'b' cms and the average height of the remaining students is 'c' cms. Find the number of students in the class. (Here $a > c$ and $b > c$)

किसी कक्षा में सभी छात्रों की औसत लम्बाई 'a' से.मी. है। इनमें से 10 छात्रों की औसत लम्बाई 'b' से.मी. है और शेष छात्रों की औसत लम्बाई 'c' से. मी. है। कक्षा में छात्रों की संख्या ज्ञात कीजिए ?

Options:

1)

$$(a(b-c))/(a-c)$$

2)

$$((b-c))/((a-c))$$

3)

$$(b-c)/(10(a-c))$$

4)

$$(10(b-c))/(a-c)$$

Correct Answer:

$$(10(b-c))/(a-c)$$

Candidate Answer:

$$(10(b-c))/(a-c)$$

Question 64.

The simplified value of $\frac{3\sqrt{7}}{\sqrt{5} + \sqrt{2}} - \frac{5\sqrt{5}}{\sqrt{2} + \sqrt{7}} + \frac{2\sqrt{2}}{\sqrt{7} + \sqrt{5}}$ is

$\frac{3\sqrt{7}}{\sqrt{5} + \sqrt{2}} - \frac{5\sqrt{5}}{\sqrt{2} + \sqrt{7}} + \frac{2\sqrt{2}}{\sqrt{7} + \sqrt{5}}$ का सरलीकृत मान क्या है?

Options:

1) 0

2) 1

3) 5

4) 6

Correct Answer: 0

Candidate Answer: 0

Question 65. If $(a+b-6)^2 + a^2+b^2+1+2b = 2ab+2a$, then the value of a is

यदि $(a+b-6)^2 + a^2+b^2+1+2b = 2ab+2a$ हो, तो a का मान क्या है?

Options:

1) 7

2) 6

3) 3.5

4) 2.5

Correct Answer: 3.5

Candidate Answer: 3.5

Question 66. Two circles of radii 17 cm and 8 cm are concentric. The length of a chord of greater circle which touches the smaller circle is

17 से.मी. और 8 से.मी. त्रिज्या वाले दो वृत्त संकेन्द्रिक हैं। छोटे वृत्त को स्पर्श करने वाले बड़े वृत्त की जीवा कितनी होगी ?



Options:

1) 15 cm

15 से.मी.

2) 16 cm

16 से.मी.

3) 30 cm

30 से.मी.

4) 34 cm

34 से.मी.

Correct Answer: 30 cm

30 से.मी.

Candidate Answer: 30 cm

30 से.मी.

Question 67. The least six digit number which is a perfect square is

सबसे छोटी छः अंको वाली वह कौन-सी संख्या है जो पूर्ण वर्ग है ?

Options:

1) 100489

2) 100000

3) 100256

4) 100225

Correct Answer: 100489

Candidate Answer: 100489

Question 68. The percentage change of a number when it is first decreased by 10% and then increased by 10% is

जब किसी संख्या को पहले 10% घटाया जाता है और फिर 10% बढ़ाया जाता है तो, उस संख्या में कितने प्रतिशत परिवर्तन होगा ?

Options:

1) 0.1 % increase

0.1 % वृद्धि

2) 1 % decrease

1 % कमी

3) 0.1 % decrease

0.1 % कमी

4) No changes

कोई परिवर्तन नहीं

Correct Answer: 1 % decrease

1 % कमी

Candidate Answer: 1 % decrease

1 % कमी

Question 69.

Find the angular elevation of the Sun when the shadow of a 15m long pole is $\frac{15}{\sqrt{3}}$ metres

Qmaths.in

जिस समय 15 m लम्बे खंभे कि छाया $\frac{15}{\sqrt{3}}$ m हो उस समय सूर्य का कोणीय उन्नयन ज्ञात कीजिए।

IBPS | RAILWAYS | LIC | SIDBI

Options:

1) 45°

2) 60°

3) 30°

4) 90°

Correct Answer: 60°

Candidate Answer: 60°

Question 70. If $2y \cos\theta = x \sin\theta$ and $2x \sec\theta - y \operatorname{cosec}\theta = 3$ then what is the value of $x^2 + 4y^2$?

यदि $2y \cos\theta = x \sin\theta$ और $2x \sec\theta - y \operatorname{cosec}\theta = 3$ तो $x^2 + 4y^2$ का मान क्या है ?

Options:

1) 4

2) 1

3) 2

4) 5

Correct Answer: 4

Candidate Answer: 4

Question 71. The difference between compound interest and simple interest on an amount of Rs. 15,000 for 2 years is Rs. 96. The rate of interest per annum is?

Rs. 15,000 की राशि पर 2 वर्ष के चक्रवृद्धि ब्याज और साधारण ब्याज के बीच Rs.96 का अन्तर है। वार्षिक ब्याज दर कितनी होगी ?

Options:

1) 6%

2) 7%

3) 8%

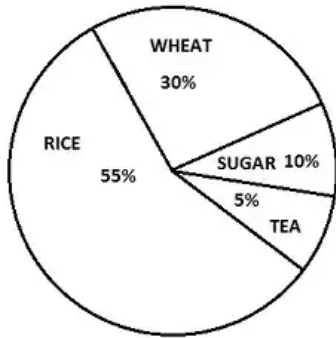
4) 9%

Correct Answer: 8%

Candidate Answer: 8%

Question 72. In the given Pie-chart, the comparative study of the production of Rice, Wheat, Sugar and Tea of a country is given. Study the Pie-Chart and answer the following questions.

दिए गए पाई-चार्ट में देश में चावल, गेहूँ, चीनी और चाय के उत्पादन का तुलनात्मक अध्ययन किया गया है। निम्नलिखित प्रश्नों के उत्तर ग्राफ को पढ़कर दीजिए।



From this diagram, the ratio of sum of wheat and sugar production to difference in production of rice and tea is

इस आरेख के अनुसार गेहूँ और चीनी के कुल उत्पादन तथा चावल और चाय के उत्पादन के अन्तर का अनुपात कितना है ?

Options:

1) 4:5

2) 5:4

3) 6:1

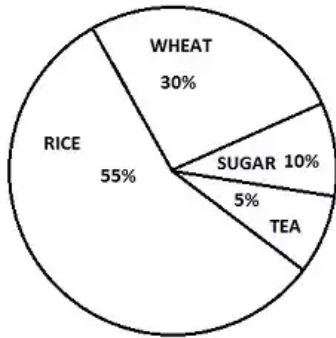
4) 1:6

Correct Answer: 4:5

Candidate Answer: 4:5

Question 73. In the given Pie-chart, the comparative study of the production of Rice, Wheat, Sugar and Tea of a country is given. Study the Pie-Chart and answer the following questions.

दिए गए पाई-चार्ट में देश में चावल, गेहूँ, चीनी और चाय के उत्पादन का तुलनात्मक अध्ययन किया गया है। निम्नलिखित प्रश्नों के उत्तर ग्राफ को पढ़कर दीजिए।



The production of rice and tea is more/greater than production of wheat by-

चावल और चाय का उत्पादन गेहूँ के उत्पादन से कितना ज्यादा है ?

Options:

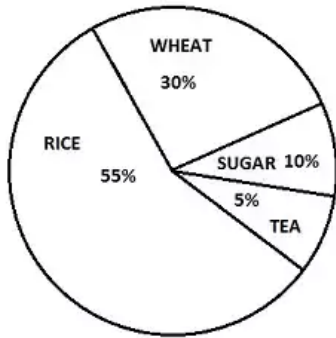
- 1) 50%
- 2) 100%
- 3) 75%
- 4) 66.6%

Correct Answer: 100%

Candidate Answer: 100%

Question 74. In the given Pie-chart, the comparative study of the production of Rice, Wheat, Sugar and Tea of a country is given. Study the Pie-Chart and answer the following questions.

दिए गए पाई-चार्ट में देश में चावल, गेहूँ, चीनी और चाय के उत्पादन का तुलनात्मक अध्ययन किया गया है। निम्नलिखित प्रश्नों के उत्तर ग्राफ को पढ़कर दीजिए।



The Central angle of Wheat % is

गेहूँ % का मध्य कोण कितने डिग्री का है ?

Options:

1) 48°

2) 98°

3) 110°

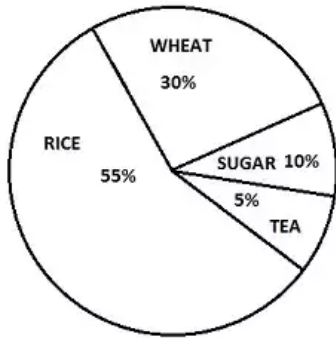
4) 108°

Correct Answer: 108°

Candidate Answer: 108°

Question 75. In the given Pie-chart, the comparative study of the production of Rice, Wheat, Sugar and Tea of a country is given. Study the Pie-Chart and answer the following questions.

दिए गए पाई-चार्ट में देश में चावल, गेहूँ, चीनी और चाय के उत्पादन का तुलनात्मक अध्ययन किया गया है। निम्नलिखित प्रश्नों के उत्तर ग्राफ को पढ़कर दीजिए।



The total production of Rice, Wheat, sugar and Tea (In Kgs) is 500000 Kgs. The production of Rice in the country is

चावल, गेहूँ, चीनी और चाय का कुल उत्पादन 500000 कि.ग्रा. है। देश में चावल का उत्पादन कितना है?

Options:

- 1) 175000 Kg
175000 कि.ग्रा.
- 2) 395000 kg
395000 कि.ग्रा.
- 3) 275000 Kg
275000 कि.ग्रा.
- 4) 27500 Kg
27500 कि.ग्रा.

Correct Answer: 275000 Kg
275000 कि.ग्रा.

Candidate Answer: 27500 Kg
27500 कि.ग्रा.

Question 76. In the following question, out of the four alternatives, choose the word which best expresses the meaning of the given word and click the button corresponding to it.

CONTRABAND

Options:

- 1) BURGLED
- 2) SMUGGLED
- 3) BAFFLED
- 4) JUGGLED

Correct Answer: SMUGGLED

Candidate Answer: JUGGLED

Question 77. In the following question, out of the four alternatives, choose the word which is opposite in meaning to the given word and click the button corresponding to it.

LENIENT

Options:

- 1) STRICT
- 2) SOLID
- 3) FORGIVING
- 4) STOIC

Correct Answer: STRICT

Candidate Answer: STRICT

Question 78. Four words are given, out of which only one word is spelt correctly. Choose the correctly spelt word and click the button corresponding to it.

Options:

- 1) Scarety
- 2) Scarcity
- 3) Scarsity
- 4) Scarecity

Correct Answer: Scarcity

Candidate Answer: Scarcity

Question 79. In the following questions, one part of the sentence may have an error. Find out which part of the sentence has an error and click the button corresponding to it. If the sentence is free from error, click the "No error" option.

He was(A) / very kind enough (B) / to invite me (C) / No Error(D).

Options:

- 1) A
- 2) B
- 3) C
- 4) D

Correct Answer: B

Candidate Answer: B

Question 80. In the following questions, one part of the sentence may have an error. Find out which part of the sentence has an error and click the button corresponding to it. If the sentence is free from error, click the "No error" option.

Police reports claim that (A) / substantial seizure of cocaine have been made(B) / in the last two months.(C) /No Error(D).

Options:

- 1) A
- 2) B
- 3) C
- 4) D

Correct Answer: B

Candidate Answer: A

Question 81. In the following questions, one part of the sentence may have an error. Find out which part of the sentence has an error and click the button corresponding to it. If the sentence is free from error, click the "No error" option.

Every conceivable race and nationality(A) / had its shared of suffering(B) / in the world wars (C)/No Error(D).

Options:

- 1) A
- 2) B
- 3) C
- 4) D

Correct Answer: B

Candidate Answer: B

Question 82. The sentences given with blanks are to be filled with an appropriate word(s). Four alternatives are suggested for each question. For each question, choose the correct alternative and click the button corresponding to it.

She _____ him angrily because he made the floor dirty with his muddy shoes.

Options:

- 1) scold
- 2) scolds
- 3) scolded
- 4) scolding

Correct Answer: scolded

Candidate Answer: scolded

Question 83. The sentences given with blanks are to be filled with an appropriate word(s). Four alternatives are suggested for each question. For each question, choose the correct alternative and click the button corresponding to it.

He walked along the road wondering what _____ happened and where all the people had gone.

Options:

- 1) had
- 2) has
- 3) have
- 4) it

Correct Answer: had

Candidate Answer: had

Question 84. The sentences given with blanks are to be filled with an appropriate word(s). Four alternatives are suggested for each question. For each question, choose the correct alternative and click the button corresponding to it.

The criminal was _____ lest he should escape.

Options:

- 1) fetid
- 2) fettered
- 3) fettled
- 4) feted

Correct Answer: fettered

Candidate Answer: fettered

Question 85. In each of the questions, four alternatives are given for the Idiom/Phrase. Choose the alternative which best expresses the meaning of the Idiom/Phrase and click the button corresponding to it.

Drive home

Options:

- 1) Find one's roots
- 2) Emphasise
- 3) Refer
- 4) Draw

Correct Answer: Emphasise

Candidate Answer: Find one's roots

Question 86. In each of the questions, four alternatives are given for the Idiom/Phrase. Choose the alternative which best expresses the meaning of the Idiom/Phrase and click the button corresponding to it.

To end in smoke

Options:

- 1) End without any practical result
- 2) End with positive result
- 3) Die in a burning house
- 4) Risk everything in a single venture

Correct Answer: End without any practical result

Candidate Answer: End without any practical result

Question 87. In each of the questions, four alternatives are given for the Idiom/Phrase. Choose the alternative which best expresses the meaning of the Idiom/Phrase and click the button corresponding to it.

A left handed compliment

Options:

- 1) A subtle rebuke
- 2) Wholesome praise
- 3) An ambiguous compliment
- 4) A mild compliment

Correct Answer: An ambiguous compliment

Candidate Answer: A subtle rebuke

Question 88. Out of the four alternatives, choose the one which can be substituted for the given words/sentences and click the button corresponding to it.

Experts who scientifically study insects

Options:

- 1) Gerontologists
- 2) Pathologists
- 3) Entomologists
- 4) Ornithologists

Correct Answer: Entomologists

Candidate Answer: Entomologists

Question 89. Out of the four alternatives, choose the one which can be substituted for the given words/sentences and click the button corresponding to it.

One who pretends to be what he is not

Options:

- 1) Hypocrite
- 2) Pessimist
- 3) Optimist
- 4) Infallible

Correct Answer: Hypocrite

Candidate Answer: Infallible

Question 90. Out of the four alternatives, choose the one which can be substituted for the given words/sentences and click the button corresponding to it.

A paper/story/poem first written out by hand

Options:

- 1) Handicraft
- 2) Manuscript
- 3) Handiwork
- 4) Thesis

Correct Answer: Manuscript [Downloaded from www.qmaths.in](http://www.qmaths.in)

Candidate Answer: Manuscript

Question 91. A sentence/a part of the sentence is underlined. Four alternatives are given to the underlined part which will improve the sentence. Choose the correct alternative and click the button corresponding to it. In case no improvement is needed, click the button corresponding to "No improvement".

The interview came alive by satellite from Hollywood

Options:

- 1) came as live
- 2) came live
- 3) came up live
- 4) No improvement

Correct Answer: came live

Candidate Answer: came up live

Question 92. A sentence/a part of the sentence is underlined. Four alternatives are given to the underlined part which will improve the sentence. Choose the correct alternative and click the button corresponding to it. In case no improvement is needed, click the button corresponding to "No improvement".

There was little he could do to save his battered reputation

Options:

- 1) salvage
- 2) wreck
- 3) destroy
- 4) No improvement

Correct Answer: salvage

Candidate Answer: No improvement

Question 93. A sentence/a part of the sentence is underlined. Four alternatives are given to the underlined part which will improve the sentence. Choose the correct alternative and click the button corresponding to it. In case no improvement is needed, click the button corresponding to "No improvement".

It is much too important to be made a joke of

Options:

- 1) too much important
- 2) too many important
- 3) very much important
- 4) No improvement

Correct Answer: No improvement

Candidate Answer: very much important

Question 94. A sentence/a part of the sentence is underlined. Four alternatives are given to the underlined part which will improve the sentence. Choose the correct alternative and click the button corresponding to it. In case no improvement is needed, click the button corresponding to "No improvement".

If he wants farther help, send him to me

Options:

- 1) further
- 2) much
- 3) best
- 4) No improvement

Correct Answer: further

Candidate Answer: further

Question 95. A sentence/ a part of the sentence is underlined. Four alternatives are given to the underlined part which will improve the sentence. Choose the correct alternative and click the button corresponding to it. In case no improvement is needed, click the button corresponding to "No improvement".

He jumped on the lake

Options:

- 1) in the
- 2) into the
- 3) onto the
- 4) No improvement

Correct Answer: into the

Candidate Answer: into the

Question 96. A passage is given with 5 questions following it. Read the passage carefully and choose the best answer to each question out of the four alternatives and click the button corresponding to it.

Some languages are used by a few people. Others, such as Mandarin Chinese and English, are spoken by millions. Many people speak two or more languages. They may use one language at home with family and friends, and another at work or school. Regional variations of language are known as dialects. The Anglo-Saxons, who conquered Britain at the end of the Roman Empire, spoke a Germanic language, which later became English. Other Germanic languages include Danish, Dutch, German and Swedish. English also contains French-derived words after it was ruled by French-speaking kings following the Norman Conquest.

Mandarin Chinese is spoken by _____ people.

Options:

- 1) little
- 2) few
- 3) many
- 4) big

Correct Answer: many

Candidate Answer: many

Question 97. A passage is given with 5 questions following it. Read the passage carefully and choose the best answer to each question out of the four alternatives and click the button corresponding to it.

Some languages are used by a few people. Others, such as Mandarin Chinese and English, are spoken by millions. Many people speak two or more languages. They may use one language at home with family and friends, and another at work or school. Regional variations of language are known as dialects. The Anglo-Saxons, who conquered Britain at the end of the Roman Empire, spoke a Germanic language, which later became English. Other Germanic languages include Danish, Dutch, German and Swedish. English also contains French-derived words after it was ruled by French-speaking kings following the Norman Conquest.

A person who is good at foreign languages is known as

Options:

- 1) Virtuoso
- 2) Linguist
- 3) Ventriloquist
- 4) Scholar

Correct Answer: Linguist

Candidate Answer: Linguist

Question 98. A passage is given with 5 questions following it. Read the passage carefully and choose the best answer to each question out of the four alternatives and click the button corresponding to it.

Some languages are used by a few people. Others, such as Mandarin Chinese and English, are spoken by millions. Many people speak two or more languages. They may use one language at home with family and friends, and another at work or school. Regional variations of language are known as dialects. The Anglo-Saxons, who conquered Britain at the end of the Roman Empire, spoke a Germanic language, which later became English. Other Germanic languages include Danish, Dutch, German and Swedish. English also contains French-derived words after it was ruled by French-speaking kings following the Norman Conquest.

_____ are regional variations of a language

Options:

- 1) English
- 2) Mandarin Chinese
- 3) Home language
- 4) Dialects

Correct Answer: Dialects

Candidate Answer: Dialects

Qmaths.in

IBPS | RAILWAYS | LIC | SIDBI

Question 99. A passage is given with 5 questions following it. Read the passage carefully and choose the best answer to each question out of the four alternatives and click the button corresponding to it.

Some languages are used by a few people. Others, such as Mandarin Chinese and English, are spoken by millions. Many people speak two or more languages. They may use one language at home with family and friends, and another at work or school. Regional variations of language are known as dialects. The Anglo-Saxons, who conquered Britain at the end of the Roman Empire, spoke a Germanic language, which later became English. Other Germanic languages include Danish, Dutch, German and Swedish. English also contains French-derived words after it was ruled by French-speaking kings following the Norman Conquest.

English also included French words _____ the Norman Conquest

Options:

- 1) after
- 2) prior
- 3) before
- 4) during

Correct Answer: after

Candidate Answer: after

Question 100. A passage is given with 5 questions following it. Read the passage carefully and choose the best answer to each question out of the four alternatives and click the button corresponding to it.

Some languages are used by a few people. Others, such as Mandarin Chinese and English, are spoken by millions. Many people speak two or more languages. They may use one language at home with family and friends, and another at work or school. Regional variations of language are known as dialects. The Anglo-Saxons, who conquered Britain at the end of the Roman Empire, spoke a Germanic language, which later became English. Other Germanic languages include Danish, Dutch, German and Swedish. English also contains French-derived words after it was ruled by French-speaking kings following the Norman Conquest.

_____ is part of a Germanic language.

Options:

- 1) Britain
- 2) Anglo-Saxons
- 3) English
- 4) Roman Empire

Correct Answer: English

Candidate Answer: Anglo-Saxons